



**pdfFactory**



**FinePrint**

## **Server Edition Administrator's Guide**

*May 3, 2005*

**Authors**  
FinePrint Software, LLC  
16 Napier Lane  
San Francisco, CA 94133  
Fax: 774-254-1923

**UK distributors**  
Software Partners Ltd  
Oak Tree House, Station Road  
Claverdon, CV35 8PE  
Tel 01926 842998  
Fax 01926 842384

## **Introduction**

This document covers FinePrint, pdfFactory, and pdfFactory Pro Server Editions (SE). Installing SE on a Windows server provides easy deployment and configuration for multiple users on any Windows client, including Citrix/Terminal Server clients and laptops.

## **SystemRequirements**

SE server requirements:

- Windows NT 4.0 Server, Windows 2000 Server, or Windows Server 2003
- Microsoft Networking with printer sharing
- Terminal Server and Citrix MetaFrame are fully supported in both desktop and single application sessions

SE client requirements:

- Windows 9x/Me, NT 4.0, 2000, or XP
- Microsoft Networking with printer sharing

## **Installation - Server**

To install SE on a server:

- download the SE executable file from [www.software-partners.co.uk](http://www.software-partners.co.uk) to your Windows server
- launch the executable file to begin the installation. Admin access to the server is required.

Note: when installing SE in a Citrix or Terminal Server environment, it is not necessary to put the Terminal Server into INSTALL mode. The SE installer will do it automatically if required.

Installing SE on a server does the following:

- installs printer drivers for Windows 9x/Me, Windows NT 4.0, and Windows 2000/XP
- installs the SE printer on the server and creates a printer share which clients can access
- installs the full product for use on the server itself

## **Installation - Client**

Once SE is installed on the server, clients may install the SE printer using the Add Printer Wizard on the client computer. Terminal Server clients will automatically be able to use the SE printer, since they will inherit the SE printer from the server itself.

## **Installation - Laptop**

An SE client installation can be converted to a standalone version that does not require a network connection to operate. To convert an installed SE product from network to local, open the Settings tab on the client and select the "Create New Printer" button. The new printer that is created will be

a local printer that does not require network access. To complete the operation, you should delete the old printer (the network connection to the server's shared printer).

Note: you must have administrative privileges on the client in order to do the "Create New Printer" operation.

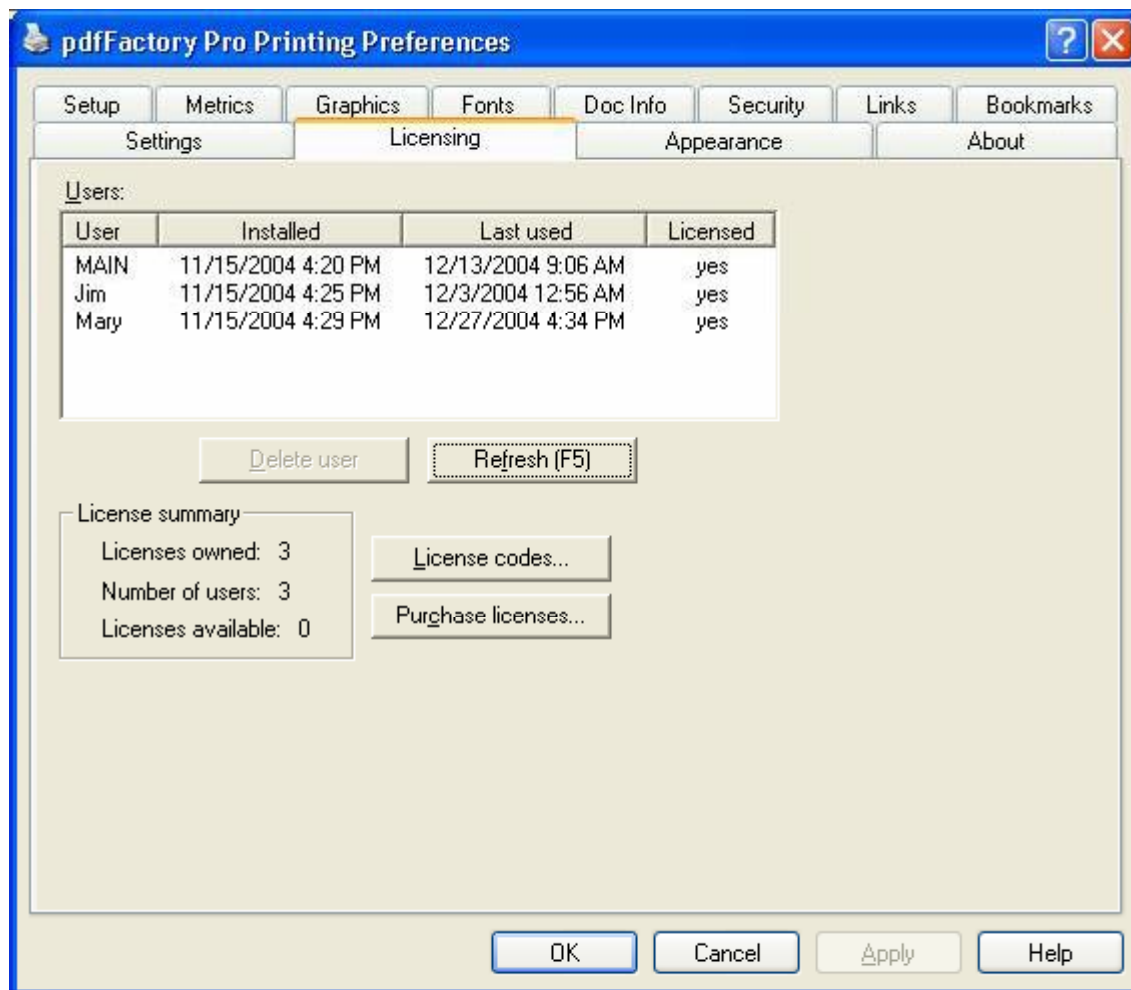
## License Management

SE provides license management and monitoring to ensure compliance with internal standards. The Licensing tab contains the license management tools and is accessible to any logged in user with administrative privileges.

The license management tools are accessed from the Licensing tab, as follows:

- open the Printers folder on the server
- right-click on the SE printer and select Printing Preferences/Document Defaults

The Licensing tab is accessible from the client workstation administrative privileges by holding down the Ctrl key and selecting the Printing Preferences in the Printers folder.



**Figure 1 : Licensing tab. Enter license codes and monitor product usage here. Also provides a history of all license codes entered.**

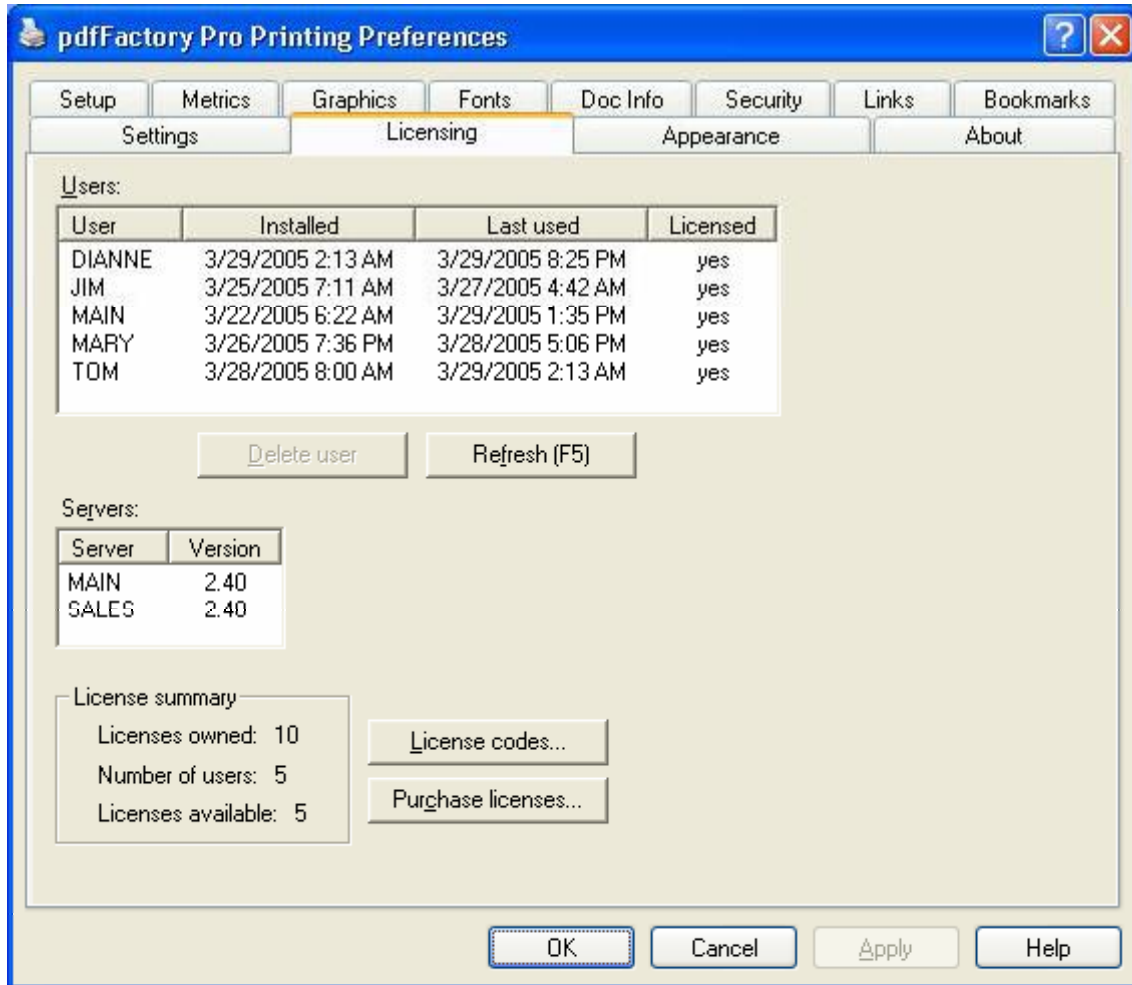


Figure 2: Licensing tab showing multiple servers with SE installed.

### Entering License Codes

When you purchase SE, you will receive a license code which you must enter into the product on the Licensing tab. Once you have entered the code, the server will allocate client licenses as needed to existing clients and to any new clients installed. Licenses are allocated when a client computer prints to its SE printer. If there are more clients using SE than there are purchased licenses, the extra clients will remain trial versions until additional licenses are purchased. You can find more details on the Licensing tab by accessing the Help file using the Help button as shown in Figure 1.

To enter the license code, click the “License codes” button on the Licensing tab and enter the code.

SE allocates its licenses based on the computer name of the connected workstation. This applies equally for both Terminal Server and standard remote workstations. A single license is allocated to a computer that uses the shared printer or accesses any number of terminal servers so that licenses are used efficiently.

## **Recovering Licenses**

Allocated licenses are recovered and returned to the available pool in either the following ways:

- SE client is uninstalled (requires admin privileges)
- A user is deleted using the “Delete user” button

## **Configuration**

Changing SE settings in the Printing Preferences dialog on the server will cause corresponding changes on the client computers. Examples include:

- pdfFactory security settings
- pdfFactory directories for saving PDFs
- FinePrint stationery
- FinePrint forms

When you click OK on the Printing Preferences dialog, you will be asked if you want the settings to be applied to just the server or to all the clients as well.

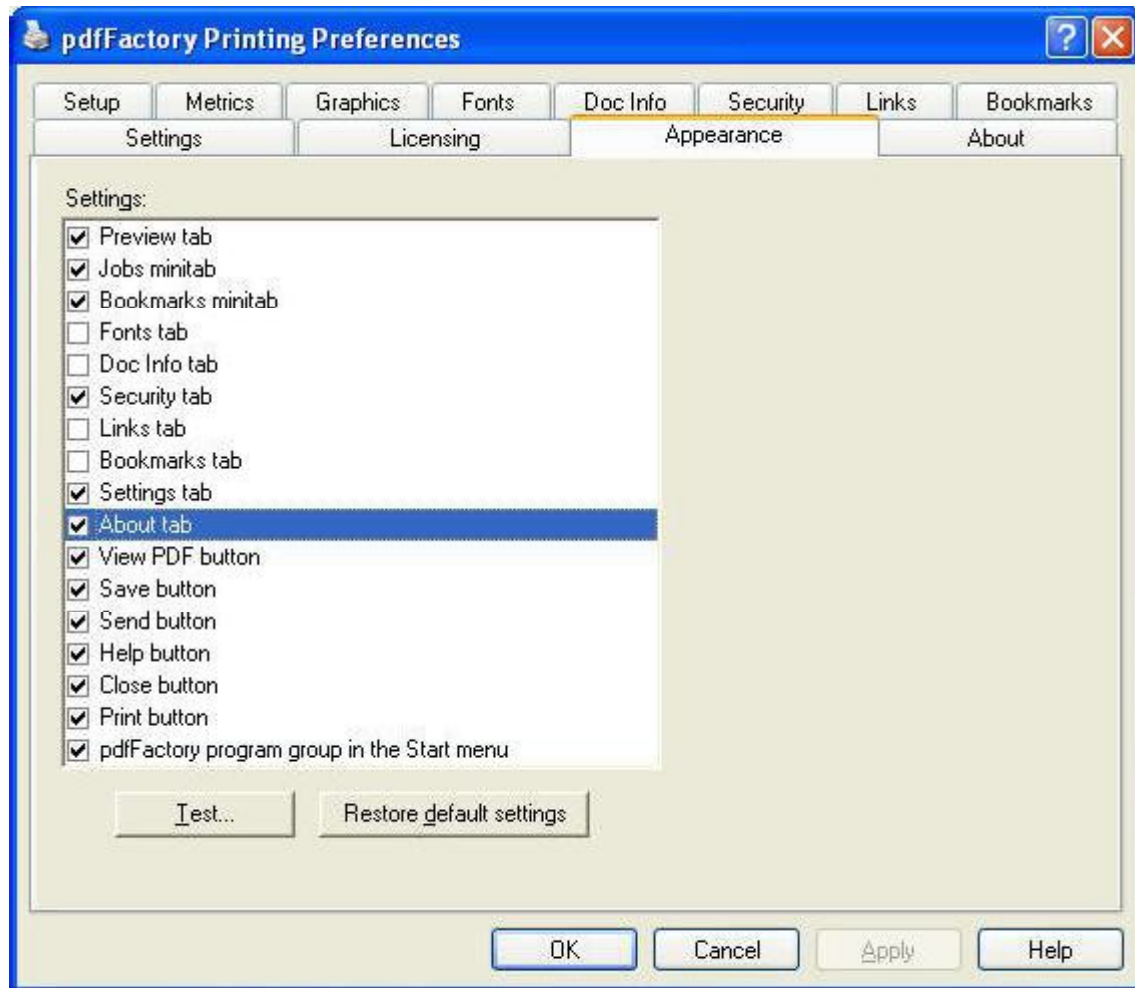
## User Interface Customization

SE provides the ability to customize the client user interface. This is useful in cases when:

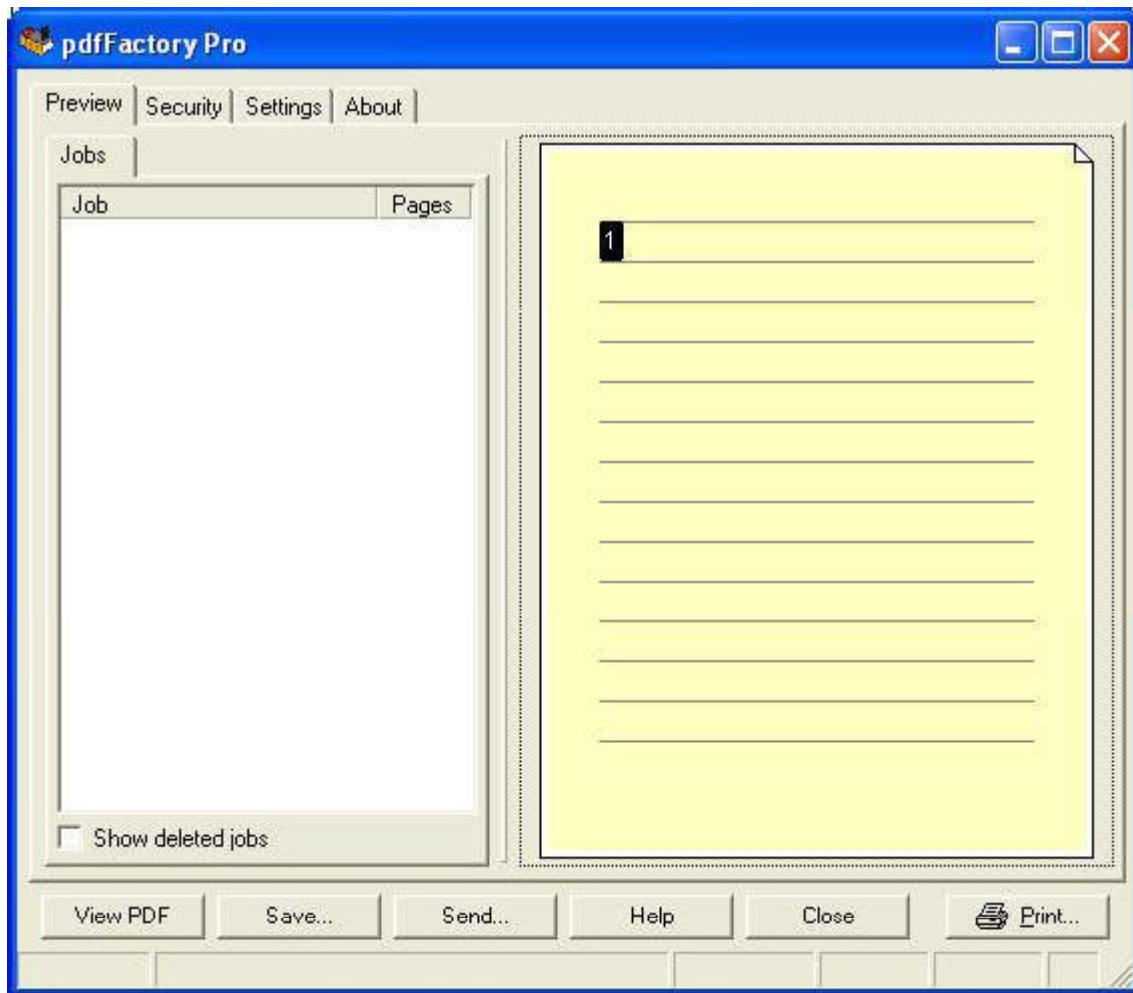
- you want to hide some features which are not used, allowing a simpler user interface
- you want to enforce settings by removing the controls to change them. Using pdfFactory Pro as an example, it is possible to set security settings and then remove the Security tab so that security settings cannot be changed by the user.

When you open Printing Preferences on the server as described above for the Licensing tab, you will also see the Appearance tab, where you can customize the user interface. Unchecking an item in the Settings list box will cause the corresponding user interface element to be suppressed on client computers. The Test button shows an example of the client window with customizations applied, so that you can see what the resulting window will look like.

Note: the Appearance tab is displayed only when you are on the server. It cannot be displayed from a client computer with the Ctrl key, as the Licensing tab can..



**Figure 3: Appearance tab - allows configuration of the appearance of the user interface. Figure 4 below shows an example of altered appearance.**



**Figure 4: Test page showing removed tabs. In this case, only the Preview, Security, and Settings tabs are available to users.**

### **Removing the Program Group**

By default, SE installs a program group in the Start menu on the client. In some cases, this is undesirable. The Appearance tab has an item for removing the program group.

### **Bypassing The Network Scan**

When the Licensing tab is activated, it will sometimes perform a scan of the entire network in order to locate other servers that are also running the SE. In some cases, it is impractical or impossible to scan the entire network. It is possible to bypass the network scan by manually editing the registry.

Here are the steps required to configure your system to bypass the network scan. If you have installed SE on more than one server, you will need to perform these steps on each server where SE is installed.

1. start REGEDIT

2. for FinePrint, navigate to HKLM\SOFTWARE\FinePrint Software\FinePrint5; for pdfFactory, navigate to HKLM\SOFTWARE\FinePrint Software\pdfFactory2
3. create a new REG\_MULTI\_SZ value (Edit menu, New Multi-String Value) and name it ServerCache.
4. double-click on the ServerCache value to edit its value. Enter the computer names of all servers on your network that are running Server Edition. Use the Enter key to add multiple computer names. When you are done entering the names, click OK.
5. create a new REG\_SZ value (Edit menu, New String Value) and name it LicenseServer.
6. double-click on the LicenseServer value to edit its value. Enter the computer name of the server which you want to designate as the SE license server. If you have only one server running SE, then enter its name. If you have more than one, then choose one and enter its name. The license server is the server which will hold the central license database used by all SE servers and clients. It can be any one of your servers.

Once you have performed these steps, accessing the Licensing tab will no longer cause the network to be scanned.

### **SETUP.EXE Options**

The SE setup program supports multiple command line options including silent installation and un-installation. In order to access these options, run SETUP.EXE and not the downloaded self-extracting archive. You can use Winzip or other ZIP tool to expand the self-extracting archive into its component files.

Setup command line options:

- |            |   |
|------------|---|
| /install   | installs SE (the default)   |
| /uninstall | removes SE  |
| /quiet=nnn | suppresses some output during installation. can be any combination of the following values: |
| 1          | to suppress the opening confirmation dialog   |
| 2          | to suppress the progress bar  |
| 4          | to suppress the closing message box   |
| 8          | to suppress the license agreement   |
| 16         | to suppress the "must reboot" message box (default to Yes)                                  |

For example, to suppress the progress bar and the license agreement, you would specify /quiet=10 (2 for the progress bar plus 8 for the license agreement).

/quiet	suppresses ALL output during installation or uninstallation
/autodelete	[installation only] tells the installer to delete the source directory after installation has completed  WARNING: this deletes the ENTIRE directory, not just files used in SE installation. You should use a temp folder or a folder specially created for this purpose.
/inf	does not actually install or uninstall; generates INF files for Add Printer Wizard setup on the current platform
/kernelmode	[installation only] when installing under Windows 2000/XP/2003, forces the kernel mode driver to be installed instead of the user mode driver
/netreinstall=directory_name	updates an SE client by running the installer in the specified location. The directory name is typically specified as a UNC path name, e.g. \\SERVER\print\$\w32x86\3. If the directory name is omitted (i.e. just /netreinstall is specified, then the installer attempts to determine the correct location by examining the user's connections to shared SE printers.
/nodisp	[installation only] prevents the installer from launching the dispatcher when setup is complete
/noini	[installation only] prevents the installer from importing old settings from a previously saved INI file  [uninstallation only] prevents the installer from saving current settings to an INI file for a subsequent installer to import
/reboot=nnn	controls the reboot initiated by the installer or uninstaller. Can be one of the following values:  0 suppresses a reboot. This does not prevent the need for rebooting the machine; it simply tells the installer/uninstaller not to prompt the user to reboot. If you use this option, you are responsible for rebooting the machine.

	1	forces a reboot. If the 16 value is specified in the /quiet option, then the machine will be rebooted without any prior warning; otherwise the user will be prompted to reboot.
/reboot		same as /reboot=1
/safe=nnn		updates an existing version by performing a "safe" reinstallation. Can be one of the following values:
	1	for a standard safe reinstallation; just updates all relevant files. This assumes that the version being installed has the exact same fileset as the version being replaced (i.e. no files were added or deleted). If any files are in use and cannot be updated, the user will be prompted to reboot the machine and the files will be updated at the next reboot.
	2	for a full fail-safe reinstallation. Uninstalls the existing version, reboots the machine, and installs the new version. Preserves user settings.
/safe		same as /safe=1

## Registry And File Usage

SE creates the following registry keys on both the server and client machines:

HKLM\Software\Microsoft\Windows\CurrentVersion\AppPaths  
 HKLM\Software\Microsoft\Windows\CurrentVersion\Run  
 used by the SE Dispatcher

HKLM\Software\Microsoft\Windows\CurrentVersion\Uninstall  
 used by Control Panel Add/Remove Programs

HKLM\Software\FinePrint Software\<<product name>  
 global SE settings which affect all users

HKCU\Software\FinePrint Software\<<product name>  
 HKU\xxx\Software\FinePrint Software\<<product name>  
 user-specific SE settings

## Program And Data Files

On a Windows 9x/Me client, SE program files are located in  
 \WINDOWS\SYSTEM

On an NT client, program files are located in  
 \WINNT\SYSTEM32

\WINNT\SYSTEM32\SPOOL\DRIVERS\W32X86\2

On a 2000/XP client, program files are located in

\WINNT\SYSTEM32

\WINNT\SYSTEM32\SPOOL\DRIVERS\W32X86\3

On an NT/2000/XP server, program files are located in

\WINNT\SYSTEM32

\WINNT\SYSTEM32\SPOOL\DRIVERS\W32X86\2

\WINNT\SYSTEM32\SPOOL\DRIVERS\W32X86\3

\WINNT\SYSTEM32\SPOOL\DRIVERS\WIN40\0

TEMP files are stored in the TEMP directory as defined in Windows system properties. SE  
TEMP

files are deleted when they are no longer used.

### **Contacting Us**

Sales and pre-sales information: [sales@software-partners.co.uk](mailto:sales@software-partners.co.uk)

Technical support: [support@software-partners.co.uk](mailto:support@software-partners.co.uk)